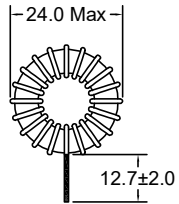


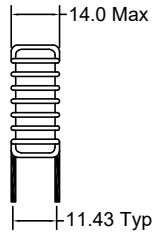
P/N: FA2414-V-560L6R4



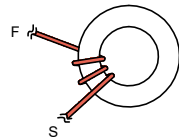
Outline Dimensions(Unit:mm)



Orthographic view

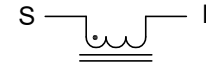


Side view



Winding Construction

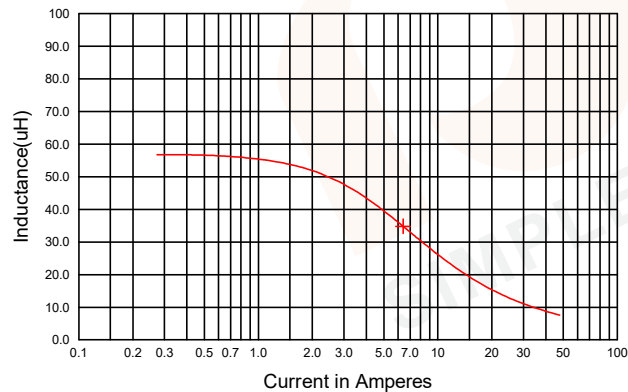
Electronical Schematic



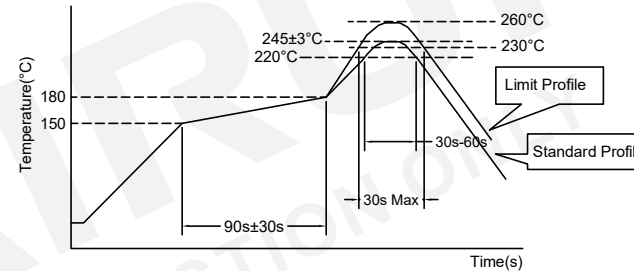
Electrical Characteristics(at 25°C)

Inductance : L0A= 56uH±15%,at 1KHz,0.3V.
 L6.4A= 34.1uH±15%,at 1KHz,0.3V.
 Rated current: 6.4Amps.
 D.C.Resistance : 0.022 ohms Typ.

Inductance VS Current



Recommended Soldering Temperature Graph.



	Standard Profile	Standard Profile
Pre-heating	150~180°C,90s±30s	
Heating	above 220°C,30s-60s	above 240°C,30s Max
Peak temperature	245°C±3°C	260°C,10s
Cycle of reflow	2 times	2 times

List of UL Certificate:

Part Name	Mat'l Description	Supplier	UL Number
Copper wire	2UEW-F/155C	Elektrisola Hangzhou Co Ltd	E258243
Core	Iron Powder Cores	KeDa Magneto Electricity	N/A

				Tianchang Fuan Electronic Co Ltd www.fuantronics.net TEL: +86-550-7814888 FAX: +86-550-7831133	 Tolerances unless otherwise specified: (.X)±0.50 (XX)±0.25 Unit of measurement: mm	Make: Qiumei.Liu Checked: Beson. zhan Approved: Anson. zhan	DRAWING TITLE HIGH CURRENT TOROID INDUCTORS Material Number: A31DM080S090	Customer P/N: Document/Rev: 00 Specification Sheet: 1 of 1 Date of Recognition: Jan./02/2020
REV	DESCRIPTION	APPD	DATE					